

DANMON NEWSLETTER

OCT. 2017



DANMON ASIA LTD.

A DAN TECHNOLOGIES COMPANY

DANMON ASIA

Danmon Asia is pleased to present our October Newsletter 2017 as a continual effort to update the most advanced technology in Broadcast, Pro Audio, AV and Telco industries.

Our Newsletter for this month will introduce some of the latest products and solutions from our manufacturer and developers that have been introduced during the IBC Exhibition 2017 in Amsterdam, Netherlands.

The list of our manufacturers is as below:

AMX:

www.amx.com

EditShare:

www.editshare.com

Exir Broadcasting:

www.exirbroadcasting.com

Genelec:

www.genelec.com

Guntermann & Drunck:

www.gdsys.de

K-Array:

www.k-array.com

Neumann:

www.neumann.com

NTP Technology:

www.ntp.dk

Phabrix:

www.phabrix.com

Ross Video:

www.rossvideo.com

Rycote:

www.rycote.com

Sencore:

www.sencore.com

Sennheiser:

www.sennheiser.com

Studer:

www.studer.com

Tascam:

www.tascam.com

TC Electronic:

www.tcelectronic.com

Trilogy:

www.trilogycorps.com

Yamaha:

www.vn.yamaha.com

Yellowtec:

www.yellowtec.com

ROSS

ROSS

Being creator of technology and services for the broadcast and production industries since founding in 1974, Ross Video has a wide range of customers in the global television industry. In this monthly Newsletter, Danmon Asia as its gold partner in Vietnam will introduce Ross News solutions.

Whether your budget is large or small, we have your solution

Ross is leading many of the latest newsroom evolutions including automated production, social media integration, and even the addition of virtual sets and augmented reality.

News Editorial Solution

With the evolution from news being solely created for linear on-air programming to a multi screen, multi platform, social media-connected consumer, newsroom systems have also needed to evolve. The Ross Inception



Newsroom Control System takes a **unique** story-based approach to make it easy to create and package content for a variety of platforms.



DANMON ASIA

News Control Room Solution



Different news operations, have different requirements depending on news style, hours of operation, frequency of content changes, and resources. For some newsrooms, the need to automate news production to guarantee quality while increasing efficiencies is crucial. For automated production control, OverDrive has re-defined news production in a manner as impactful as non-linear editing did in the past. OverDrive can be combined with production switching, graphics, camera robotics, and video playback systems from Ross for a high effective and highly integrated automated new production solution.

News Studio Solution

Viewers increasingly expect more sophisticated programming that

includes shots, scenes, and visual elements that go well beyond what traditional studio production facilities can provide. To meet these new



expectations, studios need robotic camera systems that provide precision, automated control, and the ability to capture action that defies belief. The robotic components can then be combined with systems that create virtual sets and augmented reality elements to offer an imaginative spin to what is eventually seen on the screen.

News Infrastructure Solution



Every news deployment needs a solid and robust foundation to build from. This begins with routing, combined with signal processing and management, all tied to a single, unified control system. From this base layer, systems that integrate routing, production switching, and channel control can interoperate to create unique news solutions with a high degree of integrated functionality.

Production and Creative Services



Our graphics, virtual sets, and augmented reality systems all add to the quality of your news programming. Ross also has in-house expertise to create state of the art studio and graphics packages to get you started with the new look you want, and can offer production services to expand your live event coverage.

DANMON NEWSLETTER



DANMON ASIA LTD.

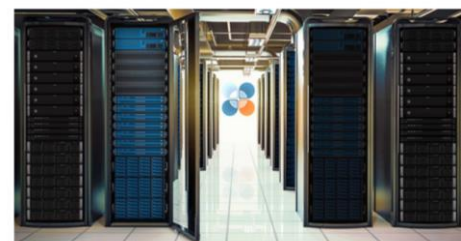
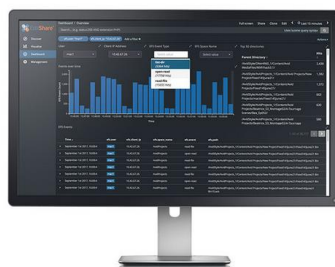
A DAN TECHNOLOGIES COMPANY

OCT. 2017

DANMON ASIA



During IBC 2017 in Amsterdam, the prestige EditShare introduced the new shared storage auditing capabilities due out in the next major release of its EditShare XStream EFS platform



Comprehensive Auditing Capabilities to Scale-Out Shared Storage, Emphasizing Security for Media Organizations

The new capability provides **comprehensive** auditing and reporting of all file system activity, including file creation, deletion, modification, opens and reads as well as general media space access. The new auditing feature will be available in all XStream EFS scale-out storage models including the recently released single-node XStream EFS 200 and EFS 300 models as well as the brand new XStream EFS 40 NL parking storage and flagship XStream EFS 450 enterprise solution.

According to Andy Liebman, CEO, EditShare, EditShare's new auditing capabilities are aimed at deterring unauthorized usage and leakage of **high-value** content and confidential data. Also, the new EFS auditing capabilities, which will be made available in Q4 of this year, assure EditShare customers and their clients that valuable assets are being watched over continuously. So in the event of unauthorised activity, the time, date, user, IP address and action can be traced immediately. This new feature, which is important to so many of our customers, will provide full accountability for all digital assets and peace of mind for EditShare customers and their clients.

The intuitive EditShare XStream EFS Auditing Dashboard provides system administrators a high-level view of activity down to individual users and files, enabling them to perform a stringent audit on each EFS storage pool and every user and, in real time, analyse which users carried out which action, to what file or directory, and when it took place.

Unlike other auditing approaches, EFS auditing does not impact the real-time operations or system performance. EditShare XStream EFS auditing data are **easily** exported to third parties and other auditing applications.

PHABRIX



Since test and measurement is becoming a more urgent demand for broadcasting station to deliver best signal for viewers, Danmon Asia would like to present Phabrix

Sx series portable generator/analyzers for hybrid IP/SDI and physical layer testing in this October Newsletter.

Sx series

The ultra-compact Sx portable test & measurement range offers

advanced capabilities including hybrid IP/SDI performance and physical layer testing, along with proven rugged design and exceptional ease of use.

Sx TAG

DANMON NEWSLETTER

OCT. 2017

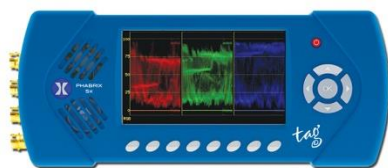


DANMON ASIA LTD.

A DAN TECHNOLOGIES COMPANY

DANMON ASIA

Portable hybrid IP, SDI + Analog generation, analysis & video/audio monitoring



Sx TAG is **ideal** for IP, 3G/HD/SD-SDI, optical SDI and Analog test & measurement applications demanding true mobility and ease of use. It provides SMPTE 2110* and 2022-6 IP encapsulation/decapsulation using 10GE IP SFP+ modules.

The Sx TAG's advanced analysis toolset also includes a waveform with low pass mode, horizontal/vertical zoom and chroma analysis, as well as AES eye analysis and a vectorscope with colour wheel analysis.

SxE

Portable 3G/HD/SD generation, analysis & monitoring with **advanced** physical layer analysis



With advanced physical layer analysis (Eye & Jitter), the SxE is ideal for applications like video technology manufacturing and live production. It provides RTE™ (Real-time Eye) technology, which instantly highlights SMPTE compliance issues like eye under/overshoot. Other key capabilities include Dolby® E, Dolby® Digital and Dolby® Digital Plus bitstream analysis, as well as video status logging, and remote operation over Ethernet.

SxA

Portable 3G/HD/SD generation, analysis & video/audio monitoring



The SxA offers the same advanced signal generation, analysis and

monitoring capabilities as the SxE, except that it doesn't provide physical layer analysis (eye and jitter instruments). There's full support for SMPTE compliance testing, with a **high performance** waveform and vectorscope plus signal generation with 32 test patterns. The SxA also offers 16 channel audio metering and Dolby metadata support.

SxD

Portable dual-link 3G/HD/SD-SDI generation, analysis & video/audio monitoring



The SxD is a **dual-link** 3G/HD/SD-SDI version of the SxA which is designed for video technology manufacturing and production applications (no AES input/outputs). It offers support of multiple advanced video standards, including 422/444, YUV/RGB, 10/12 bit and SMPTE 428-9 D-Cinema/SMPTE ST 2048-2:2011.

DANMON NEWSLETTER



DANMON ASIA LTD.

A DAN TECHNOLOGIES COMPANY

OCT. 2017

DANMON ASIA



In this month's Newsletter, we are pleased to introduce DB6 and DB2 Processor for Broadcasting industry which is developed by the world-famed TC Electronic. Let DB6 and DB2 manage your audio loudness to stay compliant with broadcast standards and legislation at all times, without sacrificing audio quality.

DB6 Broadcast Transmission Audio Processor



DB6 handles up to three SD/HD/3G streams in a single rack space unit. It measures and adjusts audio formats, loudness and true-peak level automatically, at the same time logging stats for documentation and evaluation.

DB processors have been used 24/7 at numerous world-leading broadcast stations for more than a decade and you can operate them from one constantly developing user interface.

One-Step Loudness Management Plug & Play with the Powerful LoudnessWizard™ Algorithm

True Value

Cost-Effective, High-Density, Audio at Its Finest

Forever Compliant

Be Compliant Today, Stay Compliant Tomorrow

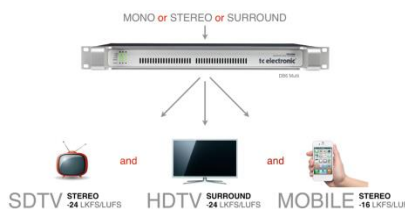
aNorm: State-of-the-art Loudness Processing



It's a new adaptive approach to loudness normalization, and it's easier to set up and use than any other loudness correction solution.

Multi Platform Delivery

No matter the input format MONO, STEREO or 5.1 SURROUND, DB6 can deliver to both SDTV, HDTV and MOBILE platforms simultaneously. DB6 UpConverts



and/or DownMixes any input format, and can deliver for multiple loudness targets in one go.

Redundancy & Reliability

Dual Power - For Independent Power Sources

Dual Fuses - Double Up on Fuses
Dual Fans - Two Low Noise Quality Fans
Relay Bypass - Just in Case!

6 Versions: Single, Multi 1, 2 & 3 SDI and AES (Bal and Unbal)

DB6 is available in 6 different versions: DB6 Multi with 1, 2 or 3 SDI streams, DB6 Single and DB6 AES with balanced or unbalanced connectors.



DB2 Digital Broadcast step by step



DB2 puts all of the tools necessary for trouble-free broadcasting into one rack-mountable unit, and adds to a scalable family of processors covering from regional stations to network centers, from Pod-cast to HDTV, from AC3 to linear, and from mono to 5.1.



DANMON NEWSLETTER

OCT. 2017



DANMON ASIA LTD.

A DAN TECHNOLOGIES COMPANY

DANMON ASIA

Automatic Loudness Correction - Consistent Loudness without the Hassle

Compliant - ITU BS.1770, EBU R128, ATSC A/85, etc.

Upgradeable - If Your Needs Grow, Upgrade from DB2 to DB4 or DB8

The Tools



DB2 gives you a wide variety of connection options to ensure simple yet comprehensive integration into all of the most popular broadcasting systems. You can also remote control DB2 with our award-winning Icon software, allowing direct parameter control and preset switching from any location. Based on an immensely powerful, low-latency topology, DB2 gives you a host of 48-bit resolution tools to be used simultaneously:

- 5-bnd Level Optimization
- On-line Delay Adjustment
- Adaptive Limiting
- Emphasis Compensation

- Filtering and EQ
- Stereo Width Adjustment

Legislation on loudness in television is constantly evolving. However, regardless of your location and no matter which TC Electronic Loudness units you use, we will always help you remain compliant with the latest revision of the broadcast standard that impacts your work. These include ITU BS.1770, EBU R128, ATSC A/85, OP-59, TR-B32

GENELEC

GENELEC®

Complementing Genelec's range of Smart monitors, these Smart subwoofers mix high-end technology with **robust** low-end performance.

AM™ Studio Subwoofers

For every Genelec Smart Active Monitoring (SAM™) system, there is an equally Smart subwoofer solution providing all-important low-end support. Genelec Smart subwoofers are built on proven Laminar Spiral Enclosure (LSE™) technology, delivering articulate and dynamic low frequency dynamic low frequency reproduction. Also featured is



is **multichannel** bass management, offering an adjustable crossover frequency and much more.

Genelec SAM subwoofers are controlled by proprietary Genelec Loudspeaker Manager (GLM™) 2.0 software and work alongside ground-breaking AutoCal™ to create an optimised and controlled monitoring environment.

Simple to deploy, adaptable and articulate, Genelec's Smart subwoofer range is the perfect addition to any neutral Smart monitoring system.

7350A SAM™ Studio Subwoofer



DANMON ASIA

For powerful and accurate low-end support in a very compact package, the 7350A Smart subwoofer can't be beaten.

When space is limited but only the best possible results will do, the 7350A Smart subwoofer can be relied upon to deliver the low-end support you need in a remarkably small footprint.



Technical specifications:

- 104 dB
- 22 Hz - 100 Hz (-6 dB) / LFE
- 22 Hz - 160 Hz (-6 dB)
- 8 inch
- 150 W (Class D)
- H 410 x W 350 x D 319 mm, 16 1/8 x 13 3/4 x 12 5/8 inch
- 19 kg / 41.8 lb
- 5.1 inputs / 5 outputs XLR analog, 1 x input / 1 x output XLR digital AES/EBU, 2 x RJ45 control network

Capable of an **exceptional** performance, the 7350A is the subwoofer of choice for all studios and facilities where space and

performance are of equal importance.

7370A SAM™ Studio Subwoofer



Partner your 8000 Series Smart Active Monitor set-up with Genelec's powerful and intelligent 12 inch subwoofer solution, the 7370A Smart subwoofer.

Created to deliver **superb** low-frequency definition, the 12 inch, 400W Class D 7370A represents the perfect blend of engineering expertise and Smart design.

Technical specifications:

- 113 dB
- 19 Hz - 100 Hz (-6 dB) / LFE
- 19 Hz - 150 Hz (-6 dB)
- 12 inch
- 400 W (Class D)
- H 625 x W 555 x D 496 mm, 24 5/8 x 21 7/8 x 19 1/2 inch
- 48 kg / 106 lb
- 7.1 analog XLR inputs / outputs, 1 x input / 1 x output XLR digital AES/EBU, 2 x RJ45 control network

Created to serve in the most demanding applications, from recording rooms to broadcast suites and outside broadcast vehicles, the 7370A is the low frequency monitoring tool professionals trust.

7380A SAM™ Studio Subwoofer



Our flagship subwoofer now brings even more LF muscle to the SAM family.

Delivering a level of performance normally associated with much larger enclosures, the 7380 subwoofer offers both high power and high SPL, with an extended low-distortion LF response and flexible bass management options.



Technical specifications:

- 119 dB
- 16 Hz - 100 Hz (-6 dB) / LFE
- 16 Hz - 120 Hz (-6 dB)
- 15 inch



DANMON ASIA

- 800 W (Class D)
- H 685 x W 718 x D 492 mm, 27 x 28 1/4 x 19 3/8 inch
- 69 kg / 152 lb
- 7.1 analog XLR inputs / outputs, 1 x input / 1 x output XLR digital AES/EBU, 2 x RJ45 control network

The 7380 boasts 7.1 channel XLR analogue I/O, while an AES/EBU digital connection allows both stereo operation – or full 7.1 digital, with the addition of Genelec's optional 9301 Digital Interface.

The 7380 is tailor made for discerning professionals in music, post, film or broadcast that demand powerful, dependable LF reproduction in a surprisingly compact form factor.

SENNHEISER



Being appointed as Sennheiser's exclusive distributor in Vietnam, Danmon Asia would like to present Sennheiser Digital 6000 series as the first digital two channel solution in one rack that has been recently launched by this **world-famed** brand.

Discover Digital 6000



Whatever you've experienced before – expect more. Even in toughest RF-conditions. The outstanding audio quality of our wireless masterpiece – Digital 9000 – is now available in a two-channel receiver, and can cope with even the most demanding live productions.

Digital 6000 features Digital 9000's

unparalleled long range transmission mode, coupled with a massive 244 MHz of switching bandwidth. The innovative user interface makes it easier to use. Sennheiser's True Bit Diversity and predictive algorithms create a reliable wireless link which remains stable when other systems fail.

Two channels per receiver



Compact and powerful: Digital 6000 is Sennheiser's first digital two channel receiver in one rack space and designed for demanding multi-channel applications in every detail.

Never lose energy



With the optional charging station, up to eight lithium-ion batteries can be charged in 19-inch racks. Front panel indicators and full remote monitoring via the Wireless Systems Manager software (WSM) allow you to check on your battery charge.

Threefold superior technology



Digital 9000's legendary Long Range mode and Sennheiser's digital audio codec deliver outstanding sound and RF performance. Where others fail, our error concealment reconstructs the audio signal and prevents dropouts in the data stream.

THE END